

# **BAR-E-L**

**Angus**



*Bull & Select Female  
Sale*

Thursday **MARCH 11** 2021  
**2 PM** at the Ranch, Stettler, AB

# Welcome to... **BAR-E-L**

On behalf of our family, I would like to welcome everyone to our Annual Bull and Select Female Sale. We would like to thank our loyal customers and friends who have and continue to support and show confidence in the BAR-E-L program.

Our cattle, both bulls and females, have evolved through careful selection, identifying your needs, and striving to improve by making investments to achieve those goals.

We take pride in providing you with uncompromising, solid, truthful data that is not manipulated in any way. The pictures are real, not photo shopped. The bulls maintain solid gain from birth to 365 days. We promise your purchase will weigh what we say he does when he shows up at your farm.

You will notice as you look through this catalogue, that there is a continued focus on our cowherd. The performance and maternal traits of our cows provide basic profit factors. Our goal is to balance cowherd excellence with performance and carcass quality. We feel this group of breeding cattle has the potential to add value to your program and add profit to your bottom line.

We are available to welcome you anytime prior to the sale for viewing. Sale day bidding is available online with DLMS or contact any of the sale staff or myself. We are here to help.

Just a note, as an extra 'Thank you' to our buyers in this year's sale, you will have the opportunity to win a Pit Boss Wood Pellet Smoker! Each purchase will earn you one chance to win; winner will be announced at the conclusion of the sale.

We look forward to seeing you!

Dave & Lynne  
**BAR-E-L Angus**



Dave & Lynne Longshore

H. 403-579-2394

C. 403-740-6788

Email: [barel Angus@gmail.com](mailto:barel Angus@gmail.com)

Website: [www.bar-e-l.com](http://www.bar-e-l.com)

## Offering...

**51** Black Angus Yearling  
Bulls

**13** Black Angus Open  
Heifers



Buyers have a  
Chance to Win  
Pit Boss  
Wood Pellet Smoker



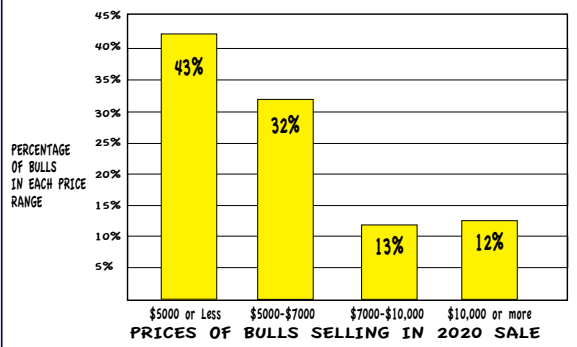
## Directions to the Ranch:

FROM #593 - 3 Miles South on RR 17-2  
 FROM #855 - 8 Miles West on Twnshp Rd 36-2, 1 Mile North  
 FROM #589 - From Byemoor, 7 Miles North to Twnshp Rd 36-2, 2 Miles West, 1 Mile North



Directions to the Ranch

### Bulls at BAR-E-L sell in EVERYONE'S BUDGET!



A Bull For your Budget

### How The Sight Unseen Purchase Plan Works:

Our first choice, and most rewarding for you our customers, is for you to attend our sale in person. However, if for any reason you cannot attend, we are offering this option to meet your bull buying needs.

1. Give me a call at 403-740-6788
2. Together we will establish your bull needs, go through the bull offering with you, and establish a list that fits your profile and budget.
3. We will do our best to purchase on your behalf, a bull from your list, your first choice if possible.
4. We will guarantee your satisfaction on arrival! You will not make payment until delivery.

Prefer to be on the phone sale day, this can be arranged.

We know our cattle, and you know what your bull needs are. If you put your trust in us, we will reward you with our best effort in selecting a bull to meet your requirements.

Sight Unseen Purchase Plan

## CALVING EASE

To help you select the best bull for your operation, all bulls have been rated with the following system.

### The criteria used to evaluate the bulls:

1. Actual birth weight
2. Consistency of birth weight of sire's calves as a group
3. Consistency of birth weight of dam's calves
4. Consistency of calving ease of sire and dam - build of the calf

### Recommendations:



Recommended for heifers

Keep in mind 50% of your calf's birth weight relates back to his mother's birth weight.

Calving Ease Score Criteria

### Can't make it to the sale?

### Internet Bidding Available.

To view this sale visit [www.dlms.ca](http://www.dlms.ca), Fill out the registration form located under registration and sign-up for your free user account and select a username and password.

BIDDERS - To be approved as a bidder, Log in to [dlms.ca](http://dlms.ca) and click BUYER APPROVAL tab, select the sale you are interested in bidding at and click sign up.

For more information

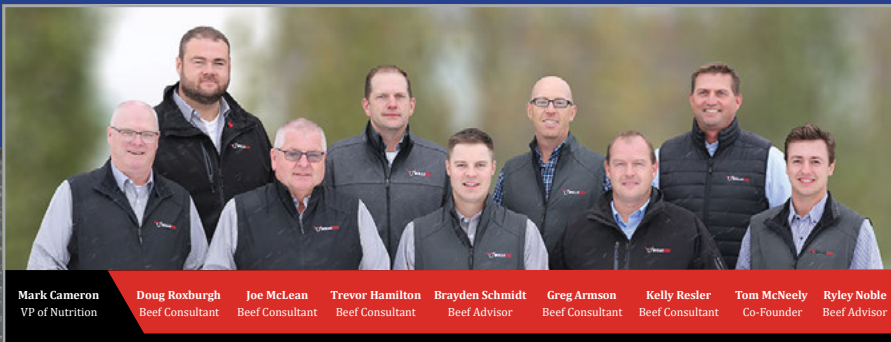
Call DLMS Reps:

Mark Shologan - 780-699-5082 or  
 DLMS Purebred Team 780.991-3025



Online Bidding

Videos of complete sale offering available Online prior to sale. Check them out!



**Mark Cameron** VP of Nutrition  
**Doug Roxburgh** Beef Consultant  
**Joe McLean** Beef Consultant  
**Trevor Hamilton** Beef Consultant  
**Brayden Schmidt** Beef Advisor  
**Greg Armon** Beef Consultant  
**Kelly Resler** Beef Consultant  
**Tom McNeely** Co-Founder  
**Ryley Noble** Beef Advisor

It's such a pleasure working with Dave & Lynne of Bar EL Angus. The passion and commitment to the seedstock industry never waivers on their ranch. It's where elite genetics are managed under ranch conditions to produce a product accepted around the globe.

The cow herd utilizes a customized mineral program that is balanced throughout the year, which supports proper bull calf development from a young age. The bull feeding program is built to maximize forage utilization and gut health; they are developed

on grass with their moms and then moved onto a balanced TMR that promotes lean muscle. The bulls are challenged with a foraged based TMR to help them develop to their genetic potential and organic minerals are used to ensure proper immune function and overall health. Bar EL Angus uses a total nutrition program on their entire operation, ensuring optimal performance of the cattle. If you have any questions about the nutrition of the sale bulls, please feel free to call. Best of luck on sale day!



**Tom McNeely**  
 Co-Founder  
 (780) 679-7220  
 tomj.mcneely@bullseyefeeds.ca



Tom McNeely of Bullseye Feeds presented a 2020 High Selling Bull Jacket to Bar H Land & Cattle, Robin Hogberg. Bob Switzer accepted on their behalf.



*Thank You*

## 2020 Buyers of BAR-E-L Genetics

Arda Farms  
 Bar H Land & Cattle  
 Joe & Kelly Becker  
 Bennett Ranch  
 Birch Meadows  
 Black Meadows Angus  
 Blue Goose Cattle Co.  
 Craig Butcher  
 Byemoor Colony  
 Chapman Cattle Company  
 Cooper Sawatsky  
 Country Lane Angus  
 Cowtrax  
 Doug Davidson  
 Tyler Davidson  
 Diamond B Ranches

Harley Day  
 Paul & Jackie Dobinson  
 Orinn Henn  
 JT Livestock Ltd.  
 Spruceville Cattle Company Ltd.  
 Duralta Farms  
 Elliott Bros.  
 Golden Oak  
 Hamilton Farms  
 Huxley Colony  
 Pat & Sandra Keith  
 Lacombe Research  
 LLB  
 MacNab Angus  
 McCutcheon Farms  
 Dale McNab

Midland Cattle Company  
 Murray & Steinkey  
 Zane Radefeldt  
 Rafter 17  
 Riverfront Angus  
 Roymac Angus  
 Sauter Ranches Inc.  
 Six Mile Red Angus  
 Ryan & Tara Schilling  
 John Schofer  
 Darren Schultz  
 Michael Sprowl  
 AJS Ranch  
 Dale & Coralee Ventnor  
 Dan & Andrea Webster  
 Wilbar Cattle Co.

# Sale Day Numbers

Dave 403.740.6788

Lynne 403.741.9445

## Sale Staff

### AUCTIONEER

Brent Carey - 403-650-9028

### RING SERVICE

Bryon Wolters 780-853-2781

### CONSULTANTS

Bohrson Marketing Services Ltd.

Scott Bohrson 403.370.3010

Billy Elmhirst 705.761-0896

### Peterosa Exports

Roger Peters 403.828.9815

### O.B.I. Livestock Ltd.

Mark Holowaychuk 403.896.4990

### Bullseye Feeds

Tom McNeely 780-679-7220

### Crowfoot Cattle Company

Dallas Jensen 403.934.7597

### Today's Angus Advantage

Chris Poley 306-220-5006

### Insurance - Stockman's Insurance

Larry Toner 306-932-4866 or 306-834-7652

## Internet Bidding Available

DLMS  
www.dlms.ca

For more information call DLMS:  
Mark Shologan 780.699.5082 or  
DLMS Purebred Team 780.991.3025

### SPECIAL REPS

CAA - Shawn Birmingham - President

### ACCOMMODATIONS

Ramada Inn

403-742-6555

Canalta Inn

403-742-5808

Super 8 Motel

403-742-3391

Heartland Lodge

403-742-3401

### TERMS OF SALE

Cash or cheque payable sale day. Each animal becomes the risk of the purchaser as soon as sold. Bulls are developed free of charge until delivery that begins in April.

### FERTILITY

All bulls will be palpated, scrotal measured and semen tested prior to sale by our veterinarian. Scrotal measurements and any bull with a deferred score will be noted sale day. All bulls selling will pass a semen evaluation prior to delivery.

### ABSOLUTELY 100% GUARANTEED

We guarantee to provide you with a sound breeding bull, capable of passing a semen test within 14 months of age. Bulls are not guaranteed to freeze semen. If you have a problem with your bull, please notify us immediately.

### IN-HERD SEMEN

BAR-E-L reserves the right to draw semen for in-herd use - at our expense - at the buyer's convenience - on any bull in the sale.

### CERTIFICATE OF REGISTRY

A certificate of registration will be transferred to the buyer for each registered animal after complete and full payment has been made.

### IDENTIFICATION

CCIA digital frequency buttons will be in their ear plus a Lot tag corresponding to the catalogue.

### INSURANCE

Will be available sale day and buyers are encouraged to purchase insurance.

### ANNOUNCEMENTS

Errors in this catalogue will be corrected by announcements from the block at sale time and such corrections will take precedence over any printed matter. Any disputes will be settled by the Auctioneer.

### BUYER REGISTRATION

Buyers please register for a buyer number prior to purchasing.

### HEALTH

All cattle are on the PHIZER GOLD vaccination program and treated with IVOMEK.

### ACCIDENTS

Although every precaution is taken, neither sale staff or the owners will assume any responsibility, and disclaims any liability, legal or otherwise for any reason.

### DELIVERY

Free delivery for bulls within a 200 mile radius of the ranch, usually to your corral. When time on the road is a factor, bulls delivered further will be to central locations, or the nearest port of entry to the USA, on purchases of \$4000 or more. Deliveries beyond the Saskatchewan/Manitoba border will be on a cost share basis.

Sales Staff  
and  
Terms

Schedule  
of  
Events

Thursday,  
March 11,  
2021

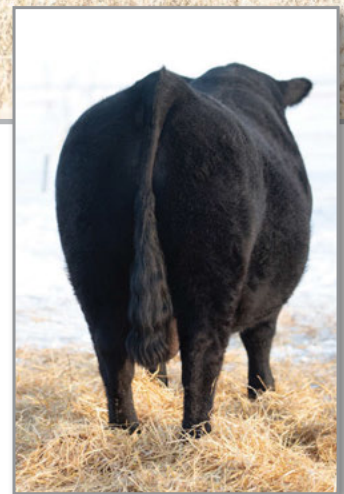
12:30 pm  
Food and  
Refreshments

2:00 pm  
BAR-E-L  
Sale

# Reference Sires



HF MAYFLOWER 191Z  
Dam of ALCATRAZ 60F



HF ALCATRAZ 60F

## HF ALCATRAZ 60F REF

Male HAMI 60F January 08 2016 2043806

AVF BREAKOUT 5409	S A V BISMARCK 5682
S: MAY-WAY BREAKOUT 1310	AVF SARA 0045
MAY-WAY LADY BANDO 086	MAY-WAY 112 819
	MAY-WAY LADY BANDO 745
HF TIGER 5T	HF KODIAK 5R
D: HF MAYFLOWER 191Z	HF ECHO 84R
HF MAYFLOWER 78P	HF JUSTICE 52L
	SHELL'S MAYFLOWER 4F

BW 83 lbs. Adj. 205D 782 lbs. Adj. 365D 1504 lbs.  
BW +1.0 WW +56 YW +103 Milk +39 Mature Wt. 2500 lbs.

On 292 progeny in Canada: Males Avg BW 84 lbs. - Females Avg BW 78 lbs.

**ALCATRAZ** In the spring of 2019, a bull named ALCATRAZ was on the radar of most in the Angus business. He was one the outstanding prospects available. We pursued the idea of purchasing him from Hamilton Farms so we teamed up with the Kornfelds from Val Marie, Saskatchewan, as well as the 'Guards of Alcatraz' group. We were successful! We purchased him for \$200,000 for 1/2 interest; thought to be a Canadian record at the time. He instantly became the talk of the Angus breed in Canada.

ALCATRAZ is incredible! He is sound, with a big foot, athletic, powerful body type, great hair, and has a likable, docile temperament. His progeny are born easy - heifer friendly - grow fast, and weigh up at weaning.

The ALCATRAZ sons are masculine with a fertile look and excellent scrotal development. His daughters are broody, feminine females that will have rich milk and ideal udder quality.

We could not be happier with the contribution he has had on our program and look forward to breeder's success around the world, who have purchased semen. There are 22 sons and 7 daughters selling in this sale.



## BROOKING FIREBRAND 6068

REF

Male JSTN 68D January 31 2016 1906246

CONNEALY EARNAN 076E  
S: BROOKING BANK NOTE 4040  
E A ROSE 918  
S A V BEST INTEREST 0136  
D: BROOKING ANNIE K 390  
500 LINE ANNIE K 9165

CONNEALY CONGENUS  
BRAZILA OF CONANGA 3991 839A  
S A V FINAL ANSWER 0035  
E A ROSE 738  
S A V BISMARCK 5682  
S A V EMBLYNETTE 8172  
BAR-E-L THOR 6T  
500 LINE ANNIE K 6271

BW 85 lbs. Adj. 205D 927 lbs. Adj. 365D 1481 lbs.  
BW +3.3 WW +55 YW +84 Milk +25

*FIREBRAND is a powerhouse! He stands on all corners on a near perfect foot. His volume and muscle mass are unparalleled by most in the Angus breed. His progeny are highly sought after and will become real assets to your herd.*

BROOKING ANNIE K 590  
Dam of FIREBRAND 6068



## BAR-E-L RESOLUTION 34F

REF

Male ET YHB 34F February 05 2018 2055104

RITO 707 OF IDEAL 3407 7075  
S: S A V RENOWN 3439  
S A V BLACKCAP MAY 4136  
TC BOOM TIME 434  
D: FLAG MISSY GAL 90568  
SCR RD 3499-60854

R R RITO 707  
IDEAL 3407 OF 1418 076  
S A V 8180 TRAVELER 004  
S A V MAY 2397  
LEACHMAN BOOM TIME  
TC QUALITY 7122  
CONNEALY RIGHT DIRECTION 3499  
WK MISSIE GAL 1778

BW 88 lbs. Adj. 205D 841 lbs. Adj. 365D 1323 lbs.  
BW +0.8 WW +52 YW +92 Milk +22

*RESOLUTION was the high seller in our 2019 Bull Sale to McCutcheon Farms. This powerful RENOWN son shows his true value with the set of sons available in this sale.*

FLAG MISSY GAL 09568  
Dam of RESOLUTION 34F



## BAR-E-L NATURAL LAW 52Y

REF

Male DBR 52Y February 18 2011 1629829

G A R GRID MAKER  
S: S A V BISMARCK 5682  
S A V ABIGALE 0451  
BAR-E-L MCC 365 ICON 20H  
D: BAR-E-L MAGNOLIA 143K  
DOUBLE FOUR DUCHESS 12G

G D A R TRAVELER 044  
G A R PRECISION 2536  
SCHOENES FIX IT 826  
S A V ABIGALE 6062  
TC STOCKMAN 365  
STRATHMORE APRIL 3A  
HF LANCER 77D  
KBJ DUCHESS 125A

BW 96 lbs. Adj. 205D 773 lbs. Adj. 365D 1357 lbs.  
BW +2.9 WW +53 YW +97 Milk +21

*After 9 years since NATURAL LAW sold through our bull sale, he is more popular today than ever. His daughters command your immediate attention. His sons perform with the best.*



## BROOKING REAL ESTATE 6072 REF

Male ET JSTN 72D February 01 2016 1926673

CONNEALY CONSENSUS  
S: CONNEALY EARNAN 076E  
BRAZILA OF CONANGA 3991 839A  
SOO LINE MOTIVE 9016  
D: SOO LINE ROSE 1019  
E A ROSE 918

KMK ALLIANCE 6595 187  
BLINDA OF CONANGA 004  
CONNEALY TOBIN  
BREESSHA OF CONANGA 1251  
HF KODIAK 5R  
TLA BEAUTY 5R  
S A V FINAL ANSWER 0035  
E A ROSE 738

BW 73 lbs. Adj. 205D 774 lbs. Adj. 365D 1342 lbs.  
BW -0.1 WW +49 YW +98 Milk +26

We purchased REAL ESTATE in 2017 from Brooking Angus for \$47,000. We were looking for a bull that combined calving ease with performance and great maternal values. We think we have been successful in meeting our goal. REAL ESTATE combines the power and performance of CONNEALY EARNAN 076E and EA ROSE 1019, back to EA ROSE 918 making REAL ESTATE a 3/4 brother to BROOKING BANKNOTE 4040.

His first daughter sold in the Open Book Invitational for \$11,000 to KCH Cattle Co. His first daughters are calving now. We could not be happier with their udder quality and mothering instinct. Co-owned with McCutcheon Farm Ltd.

SOO LINE ROSE 1019  
Dam of REAL ESTATE 6072



## EF COLOSSAL 520 REF

Male ET ESE 20C January 04 2015 1849214

DAMERON FIRST CLASS  
S: EXAR CLASSEN 1422B  
EXAR PRINCESS 2006  
SCHURRTOP MC 2500  
D: EXAR BLACKBIRD 5877  
EXAR BLACKBIRD 4448

EXG RS FIRST RATE 9903 R3  
DAMERON NORTHERN MISS 3114  
EXAR LUTTON 1831  
GREENS PRINCESS 1012  
SCHURRTOP MC  
SCHURRTOP R S 1413 2153  
EXAR LUTTON 1831  
WK BLACKBIRD 7308

BW 83 lbs. WW 845 lbs. Adj. 205D lbs. Adj. 365D lbs.  
BW +3.1 WW +52 YW +90 Milk +21

We purchased COLOSSAL from a very nice family, the Enrights in Ontario, in 2018. I first saw COLOSSAL at the Barrie Fair where he was Grand Champion Bull. He later won Agribition and the new Champion of the World competition over All Breeds that fall.

With this first group of sons, you can easily see his influence and consistency! Long spine, thick made bulls with great hair, scrotal and foot quality. We anxiously await his daughters in production! We think the COLOSSAL story is just beginning!

EXAR BLACKBIRD 5877  
Dam of COLOSSAL 520



## HF WALK AWAY JOE 139F REF

Male ET HAMI 139F January 24 2018 2059785

HA OUTSIDE 3008  
S: HA COWBOY UP 5405  
HA BLACKCAP LADY 1602  
HF TIGER 5T  
D: HF ROSEBUD 246Z  
HF ROSEBUD 94P

KG SOLUTION 0018  
HA EVER LADY 1575  
SITZ UPWARD 307R  
HA BLACKCAP LADY 5515  
HF KODIAK 5R  
HF ECHO 84R  
HF PROGRESS 20K  
HF ROSEBUD 198M

BW 83 lbs. WW 873 lbs. Adj. 205D lbs. Adj. 365D 1461 lbs.  
BW +0.0 WW +75 YW +129 Milk +17

WALK AWAY JOE has sired an impressive group of sons, all from first calf heifers. His calves were born easy and grow fast.

HF ROSEBUD 246Z  
Dam of WALK AWAY JOE 139F



# Yearling Bulls



## BAR-E-L HERO 2H

Male YHB 2H January 19 2020 2155690

HA COWBOY UP 5405  
 S: HF WALK AWAY JOE 139F  
 HF ROSEBUD 246Z

BROOKING REAL ESTATE 6072  
 D: BAR-E-L BIRDIE 40F  
 BAR-E-L BIRDIE 6D

HA OUTSIDE 300B  
 HA BLACKCAP LADY 1602  
 HF TIGER 5T  
 HF ROSEBUD 94P  
 CONNEALY EARNAN 076E  
 500 LINE ROSE 1019  
 HF G-MAN 29B  
 BAR-E-L BIRDIE 50Z

BW 73 lbs. WW 740 lbs. Adj. 205D 729 lbs. Adj. 365D 1280 lbs.  
 BW +0.1 WW +60 YW +104 Milk +23

*HERO is a real neat calving ease son of WALK AWAY JOE. Produced by one of our first REAL ESTATE daughters. Phenomenal udder structure and milk flow!*



BAR-E-L ALL STAR 7A Maternal brother to MASTERMIND 7H. Purchased by to Sandy Bar Angus, the Switzer's.



BAR-E-L BLACKCAP 4X Dam of MASTERMIND 7H

*MASTERMIND is one of the top performance calves from the group. These FIREBRAND sons are sound from the ground up! They have extra performance and are backed by generations of superior females.*

## BAR-E-L MASTERMIND 7H

Male YHB 7H January 23 2020 2155695

BROOKING BANK NOTE 4040  
 S: BROOKING FIREBRAND 6068  
 BROOKING ANNIE K 390

HF TIGER 5T  
 D: BAR-E-L BLACKCAP 4X  
 BAR-E-L BLACKCAP 29N

CONNEALY EARNAN 076E  
 E A ROSE 918  
 S A V BEST INTEREST 0136  
 500 LINE ANNIE K 9165  
 HF KODIAK 5R  
 HF ECHO 84R  
 YOUNG DALE GABRIEL 7L  
 MCC'S BLACKCAP 60'93

BW 90 lbs. WW 890 lbs. Adj. 205D 800 lbs. Adj. 365D 1432 lbs.  
 BW +3.2 WW +59 YW +93 Milk +29

BAR-E-L BLACKBIRD 91Y  
Grand dam of TRIBUTE 8H



## BAR-E-L TRIBUTE 8H

LOT  
8H

Male YHB 8H January 24 2020 2155696

S: MAY-WAY BREAKOUT 1310  
HF ALCATRAZ 60F  
HF MAYFLOWER 191Z

MUSGRAVE BIG SKY  
D: BAR-E-L BLACKBIRD 62D  
BAR-E-L BLACKBIRD 91Y

AVF BREAKOUT 5409  
MAY-WAY LADY BANDO 086  
HF TIGER 5T  
HF MAYFLOWER 78P  
CONNEALY EARNAN 076E  
SAV PRIMROSE 7861  
HF IRON MAN 167W  
BAR-E-L BLACKBIRD 63U

*The ALCATRAZ sons are cookie cutters! Very consistent!*

BW 85 lbs. WW 755 lbs. Adj. 205D 698 lbs. Adj. 365D 1296 lbs.  
BW +1.4 WW +58 YW +103 Milk +27



## BAR-E-L RESOLVE 9H

LOT  
9H

Male YHB 9H January 24 2020 2186226

S: MAY-WAY BREAKOUT 1310  
HF ALCATRAZ 60F  
HF MAYFLOWER 191Z

BAR-E-L CUTTING EDGE 124D  
D: BAR-E-L TOOTS 49F  
BAR-E-L TOOTS 24C

AVF BREAKOUT 5409  
MAY-WAY LADY BANDO 086  
HF TIGER 5T  
HF MAYFLOWER 78P  
MUSGRAVE BIG SKY  
DBRL 94T BRIDE 4W  
BAR-E-L NATURAL LAW 52Y  
BAR-E-L TOOTS 7W

*RESOLVE is a heifer bull with a low birth weight yet has more performance and grow, and great hair. He has tremendous cow power behind him with the BRIDE and TOOTS cow families.*

BW 68 lbs. WW 685 lbs. Adj. 205D 694 lbs. Adj. 365D 1301 lbs.  
BW +0.9 WW +52 YW +92 Milk +30



**BAR-E-L BLACKBIRD 63U**  
Grand dam of HALLMARK 11H

**BAR-E-L VINDICATED 109B**  
Maternal brother to dam of HALLMARK.



**HALLMARK** has solid cow power behind him. A maternal brother to the dam of HALLMARK, BAR-E-L VINDICATED 109B, topped our 2015 sale at \$30,000 for 1/2 interest to Arda Farms and Freeway Angus.



**BAR-E-L HALLMARK 11H**

Male YHB 11H January 24 2020 2155698

MAY-WAY BREAKOUT 1310	AVF BREAKOUT 5409
S: HF ALCATRAZ 60F	MAY-WAY LADY BANDO 086
HF MAYFLOWER 191Z	HF TIGER 5T
MUSGRAVE BIG SKY	HF MAYFLOWER 78P
D: BAR-E-L BLACKBIRD 3D	CONNELLY EARNAN 076E
BAR-E-L BLACKBIRD 63U	SAV PRIMROSE 7861
	S AV LEGACY 5216
	BAR-E-L BLACKBIRD 2525

BW 82 lbs. WW 810 lbs. Adj. 205D 747 lbs. Adj. 365D 1291 lbs.  
BW +1.1 WW +61 YW +103 Milk +29

**BAR-E-L GUARDIAN 12H**

Male YHB 12H January 25 2020 2155699

MAY-WAY BREAKOUT 1310	AVF BREAKOUT 5409
S: HF ALCATRAZ 60F	MAY-WAY LADY BANDO 086
HF MAYFLOWER 191Z	HF TIGER 5T
BROOKING REAL ESTATE 6072	HF MAYFLOWER 78P
D: BAR-E-L MARG 31F	CONNELLY EARNAN 076E
BAR-E-L MARG 80D	500 LINE ROSE 1019
	BROOKING OPEN ROAD 4051
	BAR-E-L MARG 128A

BW 71 lbs. WW 690 lbs. Adj. 205D 702 lbs. Adj. 365D 1202 lbs.  
BW -0.6 WW +50 YW +93 Milk +33

**Excellent calving ease with a low birth weight.**



XO CROWFOOT BLACK MISS 267Z  
Grand dam of HOMELAND 13H

*A popular bull in the group. HOMELAND shows a lot of character. He is stout, deep sided, with tons of capacity. Like all the ALCATRAZ sons, he has a great temperament!  
His grand dam, CROWFOOT BLACK MISS 267Z, was one of the high selling bred heifers at the Crowfoot dispersal at \$10,000.*

LOT  
13H

**BAR-E-L HOMELAND 13H**

Male YHB 13H January 25 2020 2155700

MAY-WAY BREAKOUT 1310	AVF BREAKOUT 5409
S: HF ALCATRAZ 60F	MAY-WAY LADY BANDO 086
HF MAYFLOWER 191Z	HF TIGER 5T
	HF MAYFLOWER 78P
S A V INTERNATIONAL 2020	S A V HARVESTOR 0338
D: BAR-E-L BLACK MISS 73E	S A V EMBLYNETTE 5483
XO CROWFOOT BLACK MISS 267Z	XO CROWFOOT JOKER 8814U
	CROWFOOT CJ BLACK MISS 7722T

BW 86 lbs. WW 815 lbs. Adj. 205D 777 lbs. Adj. 365D 1348 lbs.  
BW +2.4 WW +59 YW +100 Milk +32



*Although we have primarily been ranchers, we have made a few adjustments and purchased our first combine last fall! A bit of a learning curve!*



*Dallas and Rocco Hamilton! A new addition to the Longshore clan!*



**BAR-E-L ROSE 140F**  
Maternal sister to HUCKLEBERRY. Purchased  
by Whiskey Lane Livestock

## BAR-E-L HUCKLEBERRY 16H

Male YHB 16H January 27 2020 2155702

*HUCKLEBERRY has a maternally powerful pedigree; cows with great feet and easy doing.*

MAY-WAY BREAKOUT 1310 AVF BREAKOUT 5409  
S: HF ALCATRAZ 60F MAY-WAY LADY BANDO 086  
HF MAYFLOWER 191Z HF TIGER 5T  
HF MAYFLOWER 78P  
XO CROWFOOT JOKER 8814U CROWFOOT JOKER 6172S  
D: XO CROWFOOT ROSE 275Z CROWFOOT FORKS 699K  
XO CROWFOOT ROSE OF L 917W CROWFOOT MAX 1743L  
CROWFOOT ROSE OF L 6264S

BW 86 lbs. WW 770 lbs. Adj. 205D 704 lbs. Adj. 365D 1228 lbs.  
BW +0.9 WW +46 YW +76 Milk +31

## BAR-E-L HEARTLAND 18H

Male YHB 18H January 27 2020 2155704

MAY-WAY BREAKOUT 1310 AVF BREAKOUT 5409  
S: HF ALCATRAZ 60F MAY-WAY LADY BANDO 086  
HF MAYFLOWER 191Z HF TIGER 5T  
HF MAYFLOWER 78P  
GDAR GAME DAY 449 BOYD NEW DAY 8005  
D: BAR-E-L BIRDIE 29Z G D A R MISS WIX 474  
BIRDIE OF RAINBOW HILLS 13X S A V PIONEER 7301  
BIRDIE OF RAINBOW HILLS 91N

BW 86 lbs. WW 805 lbs. Adj. 205D 735 lbs. Adj. 365D 1313 lbs.  
BW +0.8 WW +54 YW +96 Milk +32

*HEARTLAND is a solid performer with calving ease. His GAME DAY dam is impressive! A real looker!!*



# BAR-E-L HIGH NOON 19H

LOT 19H

Male YHB 19H January 28 2020 2155705

BROOKING BANK NOTE 4040  
 S: BROOKING FIREBRAND 6068  
 BROOKING ANNIE K 390

CONNEALY EARNAN 076E  
 E A ROSE 918  
 S A V BEST INTEREST 0136  
 900 LINE ANNIE K 9165  
 S A V HARVESTOR 0338  
 BAR-E-L BLACKBIRD 63U  
 BUSHS ROCK SOLID 983  
 GERLEI ROSE 89Y

BW 82 lbs. WW 660 lbs. Adj. 205D 647 lbs. Adj. 365D 1200 lbs.  
 BW +2.0 WW +51 YW +83 Milk +17

The ROSE family offer  
 impeccable udder  
 quality.

BAR-E-L ROSE 75B  
 Grand dam of  
 HIGH NOON 19H



# BAR-E-L WESTWORLD 20H

LOT 20H

Male YHB 20H January 28 2020 2155707

MAY-WAY BREAKOUT 1310  
 S: HF ALCATRAZ 60F  
 HF MAYFLOWER 191Z

SOUTHLAND THRILLER 83X  
 D: BAR-E-L MARG 28B  
 BAR-E-L MARG 109Y

AVF BREAKOUT 5409  
 MAY-WAY LADY BANDO 086  
 HF TIGER 5T  
 HF MAYFLOWER 78P  
 SOUTHLAND TWO FITTY 250T  
 SOUTHLAND BELLE 89R  
 HF UNDISPUTED 183U  
 BAR J P MARG 77N

BW 90 lbs. WW 810 lbs. Adj. 205D 743 lbs. Adj. 365D 1294 lbs.  
 BW +2.1 WW +50 YW +89 Milk +31

BAR-E-L MARG 13E  
 Maternal sister to  
 WESTWORLD.  
 Consigned to 2017 Brooking  
 Open Book Invitational.  
 Purchased by Michelson  
 Land and Cattle.



We love the powerful depth of side and density in these ALCATRAZ  
 sons! A pedigree that features the two time Agribition Grand  
 Champion Bull, THRILLER!

## Our Graduates

Olivia  
 graduated  
 from  
 Elementary  
 School



Rylyn  
 graduated  
 from  
 kindergarten.





BAR-E-L MAGNOLIA 105D - Dam of REDEMPTION 22H



BAR-E-L MAGNOLIA 78Z  
Grand dam of REDEMPTION 22H



BAR-E-L MAGNOLIA 15T  
Great grand dam of REDEMPTION 22H. Reserve Champion Female 2009 World Angus Forum.

**LOT 22H**  
**BAR-E-L REDEMPTION 22H**

Male YHB 22H January 28 2020 2155710

MAY-WAY BREAKOUT 1310	AVF BREAKOUT 5409
S: HF ALCATRAZ 60F	MAY-WAY LADY BANDO 086
HF MAYFLOWER 191Z	HF TIGER 5T
	HF MAYFLOWER 78P
BROOKING OPEN ROAD 4051	S A V RESOURCE 1441
D: BAR-E-L MAGNOLIA 105D	TLA BEAUTY 6R
BAR-E-L MAGNOLIA 78Z	SOUTHLAND THRILLER 83X
	BAR-E-L MAGNOLIA 15T

BW 92 lbs. WW 870 lbs. Adj. 205D 817 lbs. Adj. 365D 1364 lbs.  
BW +2.5 WW +60 YW +101 Milk +33

*REDEMPTION has always been at the top of my list. A popular individual at a young age. He has character, powerful front to back, wide over the withers, big top, wide pins, and sound in every way. I think he would be a great choice to consider for the 50th Agribition Show Fall 2021!*

**RETAINING 1/3 SEMEN INTEREST**



BAR-E-L EXPANSION 12G  
Maternal brother to REDEMPTION sold in last year's sale to Hamilton Farms for \$21,000.

**LOT 24H**  
**BAR-E-L CAPITAL 24H**

Male YHB 24H January 29 2020 2155711

MAY-WAY BREAKOUT 1310  
 S: HF ALCATRAZ 60F  
 HF MAYFLOWER 191Z

HF G-MAN 29B  
 D: BAR-E-L ELITE 134E  
 BAR-E-L ELITE 44Z

AVF BREAKOUT 5409  
 MAY-WAY LADY BANDO 086  
 HF TIGER 5T  
 HF MAYFLOWER 78P  
 HF SIMULATOR 62Z  
 HF ECHO 178W  
 R A F WIDE WORLD 920  
 BAR-E-L ELITE 88S

BW 79 lbs. WW 690 lbs. Adj. 205D 676 lbs. Adj. 365D 1183 lbs.  
 BW +1.0 WW +44 YW +78 Milk +31

*CAPITAL has a nice hip and great hair. The stamp of all the ALCATRAZ sons.*



**LOT 26H**  
**BAR-E-L HEARTLAND 26H**

Male TW YHB 26H January 29 2020 2155713

CONNEALY EARNAN 076E  
 S: BROOKING REAL ESTATE 6072  
 900 LINE ROSE 1019

BAR-E-L MR TIBBS 61C  
 D: BAR-E-L BAYBERRY 168F  
 BAR-E-L BAYBERRY 45Y

CONNEALY CONSENSUS  
 BRAZILA OF CONANGA 3991 839A  
 900 LINE MOTIVE 9016  
 E A ROSE 918  
 S A V INTERNATIONAL 2020  
 HF TIBBIE 115S  
 CROWFOOT EQUATION 5793R  
 GEIS BAYBERRY 82'06

BW 76 lbs. WW 740 lbs. Adj. 205D 755 lbs. Adj. 365D 1266 lbs.  
 BW +2.5 WW +51 YW +91 Milk +23

*This REAL ESTATE son, HEARTLAND, is a neat made bull with style and balance.*



**LOT 27H**  
**BAR-E-L HEADLINE 27H**

Male TW YHB 27H January 29 2020 2155714

EXAR CLASSEN 1422B  
 S: EF COLOSSAL 520  
 EXAR BLACKBIRD 5877

S A V NET WORTH 4200  
 D: BAR-E-L BIRDIE 46X  
 GEIS BIRDIE 113'00

DAMERON FIRST CLASS  
 EXAR PRINCESS 2006  
 SCHURRTOP MC 2500  
 EXAR BLACKBIRD 4448  
 S A V 8180 TRAVELER 004  
 S A V MAY 2410  
 GEIS MAXIMUM 26'95  
 BIRDIE OF RAINBOW HILLS 91G

BW 70 lbs. WW 800 lbs. Adj. 205D 735 lbs. Adj. 365D 1300 lbs.  
 BW +3.9 WW +52 YW +93 Milk +24

*Another top performer from old 46X. Maternal brother sold to LLB in last year's sale.*



**LOT 30H**  
**BAR-E-L HANDSOME 30H**

Male YHB 30H January 30 2020 2155716

MAY-WAY BREAKOUT 1310  
 S: HF ALCATRAZ 60F  
 HF MAYFLOWER 191Z  
 HF G-MAN 29B  
 D: BAR-E-L BLACKBIRD 155E  
 BAR-E-L BLACKBIRD 252S  
 AVF BREAKOUT 5409  
 MAY-WAY LADY BANDO 086  
 HF TIGER 5T  
 HF MAYFLOWER 78P  
 HF SIMULATOR 62Z  
 HF ECHO 178W  
 CRESCENT CREEK 06 RITO 50L  
 BAR-E-L BLACKBIRD 129N

BW 94 lbs. WW 680 lbs. Adj. 205D 671 lbs. Adj. 365D 1184 lbs.  
 BW +4.6 WW +53 YW +91 Milk +26

**HANDSOME, a 'no holes' calf that ties it all together!  
 Very complete.**



**LOT 31H**  
**BAR-E-L BANKROLL 31H**

Male YHB 31H January 30 2020 2155717

BROOKING BANK NOTE 4040  
 S: BROOKING FIREBRAND 606B  
 BROOKING ANNIE K 390  
 HF UNDISPUTED 183U  
 D: BAR-E-L DUCHESS 174X  
 BAR-E-L DUCHESS 160U  
 CONNEALY EARNAN 076E  
 E A ROSE 91B  
 S A V BEST INTEREST 0136  
 500 LINE ANNIE K 9165  
 HF KODIAK 5R  
 HF ANNIE 53R  
 S A V NET WORTH 4200  
 BAR-E-L DUCHESS 116R

BW 92 lbs. WW 740 lbs. Adj. 205D 685 lbs. Adj. 365D 1310 lbs.  
 BW +2.8 WW +42 YW +70 Milk +27

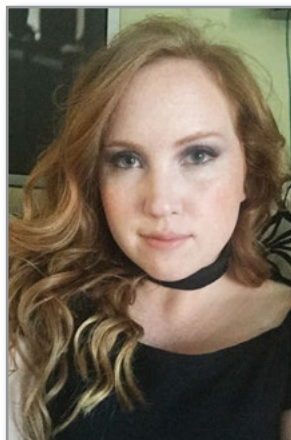


**BAR-E-L DUCHESS 97G**  
 Maternal sister to  
 DUCHESS 174X dam of  
 BANKROLL 31H.

**Another solid stud from the DUCHESS family! BANKROLL is full of muscle and character. We have 5 maternal sisters to BANKROLL in production.**



Rylyn helping out.



Jenna



**A few generations of hockey players!  
 Dallas, Dave, Rylyn,  
 Boston and Olivia.  
 Just missing Jenna!**



**EVERBLACK KATHLEEN 5E**  
 Dam of RESERVE 35H. KATHLEEN 5E was \$13,500  
 purchase from the Gibson's at Everblack.

**BAR-E-L RESERVE 35H**

**LOT 35H**

Male YHB 35H January 31 2020 2155720

MAY-WAY BREAKOUT 1310	AVF BREAKOUT 5409
S: HF ALCATRAZ 60F	MAY-WAY LADY BANDO 086
HF MAYFLOWER 191Z	HF TIGER 5T
	HF MAYFLOWER 78P
PEAK DOT UNANIMOUS 743B	VISION UNANIMOUS 141B
D: EVERBLACK KATHLEEN 5E	PEAK DOT HEATHER 775Y
EVERBLACK KATHLEEN 65P	DRYLAND ALLIANCE 259
	MINBURN KATHLEEN 224L

BW 84 lbs. WW 805 lbs. Adj. 205D 785 lbs. Adj. 365D 1410 lbs.  
 BW +1.8 WW +57 YW +102 Milk +35

*A square made, deep bodied bull. The incredible consistency found in the  
 ALCATRAZ sons is very satisfying!*



*Dallas and Eliza and crew, Denver,  
 Olivia and Boston.*





BAR-E-L MARG 80D  
Dam of SERGEANT  
YORK 36H

LOT  
36H

BAR-E-L SERGEANT YORK 36H

Male YHB 36H January 31 2020 2155721

MAY-WAY BREAKOUT 1310  
S: HF ALCATRAZ 60F  
HF MAYFLOWER 191Z  
HF MAYFLOWER 78P  
S A V RESOURCE 1441  
TLA BEAUTY 6R  
500 LINE THOR 1199  
BAR-E-L MARG 109Y

BW 86 lbs. WW 810 lbs. Adj. 205D 768 lbs. Adj. 365D 1305 lbs.  
BW +1.4 WW +56 YW +100 Milk +34

The MARG family are very productive. MARG 109Y has 5 daughters in the herd, and 3 sons working in the industry.



BAR-E-L EMPIRE 23E - 2017 CWA Senior Bull Calf Champion. A son of BAR-E-L MARG 128A, grand dam of SERGEANT YORK 36H.

LOT  
42H

BAR-E-L HULK 42H

Male YHB 42H February 01 2020 2155723

BROOKING BANK NOTE 4040  
S: BROOKING FIREBRAND 6068  
BROOKING ANNIE K 390  
HF UNDISPUTED 183U  
D: BAR-E-L MARG 109Y  
BAR J P MARG 77N  
CONNEALY EARNAN 076E  
E A ROSE 918  
S A V BEST INTEREST 0136  
500 LINE ANNIE K 9165  
HF KODIAK 5R  
HF ANNIE 53R  
S A V FINAL ANSWER 0035  
HAPPYVALE JSP MARG 66E

BW 92 lbs. WW 785 lbs. Adj. 205D 732 lbs. Adj. 365D 1236 lbs.  
BW +2.0 WW +42 YW +71 Milk +26

A rugged, stout made FIREBRAND son. Excellent foot quality on the 6068 sons as well. LOT 36H and LOT 42H are both from the MARG cow family. Extremely productive!



**LOT 44H**  
**BAR-E-L BLACKTHORN 44H**

Male YHB 44H February 01 2020 2155725

BROOKING BANK NOTE 4040  
 S: BROOKING FIREBRAND 6068  
 BROOKING ANNIE K 390

KR BULLSEYE 3451  
 D: HF ECHO 69C  
 HF ECHO 279X

CONNELLY EARNAN 076E  
 E A ROSE 918  
 S A V BEST INTEREST 0136  
 SOO LINE ANNIE K 9165  
 MOGCK BULLSEYE  
 WK QUEEN 1540  
 HF KODIAK 5R  
 HF ECHO 167R

BW 94 lbs. WW 760 lbs. Adj. 205D 709 lbs. Adj. 365D 1220 lbs.  
 BW +3.3 WW +54 YW +87 Milk +26

*A long bodied, muscular FIREBRAND son. A very productive dam; sound foot and great udder.*



**LOT 46H**  
**BAR-E-L LEGEND 46H**

Male YHB 46H February 02 2020 2155727

MAY-WAY BREAKOUT 1310  
 S: HF ALCATRAZ 60F  
 HF MAYFLOWER 191Z

S A V INTERNATIONAL 2020  
 D: BAR-E-L DUCHESS 53C  
 BAR-E-L DUCHESS 174X

AVF BREAKOUT 5409  
 MAY-WAY LADY BANDO 086  
 HF TIGER 5T  
 HF MAYFLOWER 78P  
 S A V HARVESTOR 0338  
 S A V EMBLYNETTE 5483  
 HF UNDISPUTED 183U  
 BAR-E-L DUCHESS 160U

BW 86 lbs. WW 800 lbs. Adj. 205D 748 lbs. Adj. 365D 1286 lbs.  
 BW +1.0 WW +54 YW +92 Milk +33

*If you follow our program, you soon realize just how predictable and productive the DUCHESS cows are.*



**LOT 47H**  
**BAR-E-L HIGHLIGHT 47H**

Male YHB 47H February 02 2020 2155729

EXAR CLASSEN 1422B  
 S: EF COLOSSAL 520  
 EXAR BLACKBIRD 5877

HF G-MAN 29B  
 D: BAR-E-L BIRDIE 6D  
 BAR-E-L BIRDIE 50Z

DAMERON FIRST CLASS  
 EXAR PRINCESS 2006  
 SCHURRTOP MC 2500  
 EXAR BLACKBIRD 4448  
 HF SIMULATOR 62Z  
 HF ECHO 178W  
 MVF FRONTIER 17X  
 BAR-E-L BIRDIE 194W

BW 92 lbs. WW 780 lbs. Adj. 205D 746 lbs. Adj. 365D 1176 lbs.  
 BW +3.9 WW +50 YW +84 Milk +26

*HIGHLIGHT, a COLOSSAL son is packed with meat and style.*



**LOT 49H**

## BAR-E-L HOGAN 49H

Male    YHB 49H    February 02 2020    2155730

MAY-WAY BREAKOUT 1310	AVF BREAKOUT 5409
S: HF ALCATRAZ 60F	MAY-WAY LADY BANDO 086
HF MAYFLOWER 191Z	HF TIGER 5T
	HF MAYFLOWER 78P
CONNEALY CONFIDENCE 0100	CONNEALY TOBIN
D: HARPREY MISS MIDDLEBROOK 15C	BECKA GALA OF CONANGA 8281
HARPREY MISS MIDDLEBROOK 63A	HARPREY SLUGGER 11U
	HARPREY MISS MIDDLEBROOK 29U

BW 90 lbs.    WW 760 lbs.    Adj. 205D 714 lbs.    Adj. 365D 1248 lbs.  
 BW +1.9    WW +51    YW +90    Milk +35

*HOGAN, a rugged, loose made ALCATRAZ son that will grow into a big powerful bull.*

**LOT 51H**

## BAR-E-L ADMIRAL 51H

Male    YHB 51H    February 03 2020    2155732

MAY-WAY BREAKOUT 1310	AVF BREAKOUT 5409
S: HF ALCATRAZ 60F	MAY-WAY LADY BANDO 086
HF MAYFLOWER 191Z	HF TIGER 5T
	HF MAYFLOWER 78P
SAV RESOURCE 1441	RITO 707 OF IDEAL 3407 7075
D: BAR-E-L TOOTS 117C	SAV BLACKCAP MAY 4136
GENEL TOOTS 573R	FOUR BAR X NEW DESIGN 2N
	SNT TOOTS 359N

BW 88 lbs.    WW 725 lbs.    Adj. 205D 682 lbs.    Adj. 365D 1240 lbs.  
 BW +1.3    WW +46    YW +86    Milk +28

*ADMIRAL, a combination of ALCATRAZ and the legendary SAV RESOURCE, has created a 'no holes', very complete sire prospect.*



Tanis and Maryn feeding their cows



Papa with Rylyn, Maryn and Jill.



Papa and Nana with Olivia and Boston.



BAR-E-L BRIDE 159D  
Dam of BLUEPRINT 55H

*BLUEPRINT was high on my approval list all summer. Attractive made, expressive muscle, and perfect structure. He had a major setback at weaning, but is doing great now. A real sleeper.*



DBRL 94T BRIDE 4W with a daughter at side.  
Grand dam of BLUEPRINT 55H



BAR-E-L ICEBERG  
QUEST 75G  
Maternal brother of  
BLUEPRINT 55H. Purchased by  
Roymac Angus for \$23,500.

## LOT 55H BAR-E-L BLUEPRINT 55H

Male YHB 45H February 03 2020 2155735

MAY-WAY BREAKOUT 1310  
S: HF ALCATRAZ 60F  
HF MAYFLOWER 191Z  
MUSGRAVE BIG SKY  
D: BAR-E-L BRIDE 159D  
DBRL 94T BRIDE 4W  
AVF BREAKOUT 5409  
MAY-WAY LADY BANDO 086  
HF TIGER 5T  
HF MAYFLOWER 78P  
CONNELLY EARNAN 076E  
SAV PRIMROSE 7861  
HF ALASKAN 94T  
SANDY BAR BRIDE 74T

BW 94 lbs. WW 750 lbs. Adj. 205D 724 lbs.  
BW +2.6 WW +56 YW +96 Milk +29

## LOT 58H BAR-E-L TRADITION 58H

Male YHB 58H February 04 2020 2155736

S A V BISMARCK 5682  
S: BAR-E-L NATURAL LAW 52Y  
BAR-E-L MAGNOLIA 143K

HF SMOKIN' ACES 105Y  
D: BAR-E-L TOOTS 177C  
BAR-E-L TOOTS 125T

G A R GRID MAKER  
S A V ABIGALE 0451  
BAR-E-L MCC 365 ICON 20H  
DOUBLE FOUR DUCHESS 12G  
GREENS PREMIUM 757B  
HF ERICA 26T  
S A V 004 DENSITY 4336  
GENEL T00TS 573R

BW 94 lbs. WW 730 lbs. Adj. 205D 618 lbs. Adj. 365D 1265 lbs.  
BW +3.0 WW +43 YW +76 Milk +17

*One of two sons of breed legend, NATURAL LAW. A sire that is as popular today as he was 8 years ago.*



# BAR-E-L MOONSHINE 63H

Male YHB 63H February 05 2020 2155741

S: SAV RENOWN 3439  
S: BAR-E-L RESOLUTION 34F  
FLAG MISSY GAL 90568

MUSGRAVE BIG SKY  
D: BAR-E-L BIRDIE 33D  
BAR-E-L BIRDIE 29Z

RITO 707 OF IDEAL 3407 7075  
S A V BLACKCAP MAY 4136  
TC BOOM TIME 43  
SCR RD 3499-60854  
CONNEALY EARNAN 076E  
SAV PRIMROSE 7861  
GDAR GAME DAY 449  
BIRDIE OF RAINBOW HILLS 13X

BW 78 lbs. WW 740 lbs. Adj. 205D 717 lbs. Adj. 365D 1201 lbs.  
BW -0.2 WW +52 YW +91 Milk +24

*MOONSHINE is a royally bred son of our high seller from our 2019 bull sale. This attractive made, big topped son RESOLUTION has a lot to offer.*



FLAG MISSY GAL 90568  
Dam of BAR-E-L RESOLUTION 34F  
the sire of MOONSHINE 63H



# BAR-E-L NAVIGATOR 64H

Male YHB 64H February 05 2020 2155742

BROOKING BANK NOTE 4040  
S: BROOKING FIREBRAND 6068  
BROOKING ANNIE K 390

HF G-MAN 29B  
D: BAR-E-L LADY MONOGRAM 25E  
BAR-E-L LADY MONOGRAM 42Y

CONNEALY EARNAN 076E  
E A ROSE 91B  
S A V BEST INTEREST 0136  
500 LINE ANNIE K 9165  
HF SIMULATOR 62Z  
HF ECHO 178W  
HF ALASKAN 94T  
B.B.A.R. LADY MONOGRAM 3167

BW 96 lbs. WW 760 lbs. Adj. 205D 758 lbs. Adj. 365D 1249 lbs.  
BW +4.8 WW +58 YW +88 Milk +25

*NAVIGATOR is long spined, smooth made, and blended together in every way. The LADY MONOGRAM's are producers! Be sure to check out the feature from the grand dam 42Y - LOT 104H!*



Travis and the girls checking cows.



Rylyn's first day of Grade 1!



Maryn's first day of Playschool!



Kylie, Rylyn and Maryn



BAR-E-L DUCHESS 142A - Dam of NAVIGATOR 68H

## BAR-E-L NAVIGATOR 68H

Male YHB 68H February 06 2020 2160800

BROOKING BANK NOTE 4040  
 S: BROOKING FIREBRAND 6068  
 BROOKING ANNIE K 390  
 HF SMOKIN' ACES 105Y  
 D: BAR-E-L DUCHESS 142A  
 BAR-E-L DUCHESS 174X

CONNEALY EARNAN 076E  
 E A ROSE 91B  
 S A V BEST INTEREST 0136  
 500 LINE ANNIE K 9165  
 GREENS PREMIUM 757B  
 HF ERICA 26T  
 HF UNDISPUTED 183U  
 BAR-E-L DUCHESS 160U

BW 84 lbs. WW 830 lbs. Adj. 205D 789 lbs. Adj. 365D 1313 lbs.  
 BW +1.0 WW +49 YW +77 Milk +26

*A good looking stud here. NAVIGATOR is proud, stout, deep bodied, and stands square on a great foot.*

## BAR-E-L RESOLUTION 71H

Male YHB 71H February 08 2020 2160803

MAY-WAY BREAKOUT 1310  
 S: HF ALCATRAZ 60F  
 HF MAYFLOWER 191Z  
 S A V INTERNATIONAL 2020  
 D: BAR-E-L BLACKCAP 159C  
 BAR-E-L BLACKCAP 4X

AVF BREAKOUT 5409  
 MAY-WAY LADY BANDO 086  
 HF TIGER 5T  
 HF MAYFLOWER 78P  
 S A V HARVESTOR 0338  
 S A V EMBLYNETTE 5483  
 HF TIGER 5T  
 BAR-E-L BLACKCAP 29N

BW 88 lbs. WW 715 lbs. Adj. 205D 686 lbs. Adj. 365D 1163 lbs.  
 BW +2.3 WW +51 YW +90 Milk +31

*It's easy to sound repetitious with these ALCATRAZ sons. They are so similar!*



BAR-E-L BLACKCAP 4X  
 Grand dam of RESOLUTION 71H







## BAR-E-L BLACKOUT 72H

LOT  
72H

Male YHB 72H February 08 2020 2160804

HA COWBOY UP 5405  
S: HF WALK AWAY JOE 159F  
HF ROSEBUD 246Z

HA OUTSIDE 3008  
HA BLACKCAP LADY 1602  
HF TIGER 5T  
HF ROSEBUD 94P  
CONNEALY EARNAN 076  
500 LINE ROSE 1019  
BUSH'S ROCK SOLID 983  
BAR-E-L NAOMI 60Y

BW 72 lbs. WW 720 lbs. Adj. 205D 767 lbs. Adj. 365D 1273 lbs.  
BW -0.8 WW +64 YW +112 Milk +21



BAR-E-L NAOMI 8B  
Grand dam of  
BLACKOUT 72H

## BAR-E-L SPECIALIST 75H

LOT  
75H

Male YHB 75H February 08 2020 2160805

SAV BISMARCK 5682  
S: BAR-E-L NATURAL LAW 52Y  
BAR-E-L MAGNOLIA 143K

GAR GRID MAKER  
SAV ABIGALE 0451  
BAR-E-L MCC 365 ICON 20H  
DOUBLE FOUR DUCHESS 12G  
HF SIMULATOR 62Z  
HF ECHO 178W  
SAV NET WORTH 4200  
BAR-E-L DUCHESS 116R

BW 94 lbs. WW 730 lbs. Adj. 205D 716 lbs. Adj. 365D 1187 lbs.  
BW +3.5 WW +49 YW +88 Milk +25



HF G-MAN 29B  
Sire of BAR-E-L  
DUCHESS 137D



GUNNER

## BAR-E-L BONAFIDE 85H

LOT  
85H

Male YHB 85H February 10 2020 2160808

MAY-WAY BREAKOUT 1310  
S: HF ALCATRAZ 60F  
HF MAYFLOWER 191Z

AVF BREAKOUT 5409  
MAY-WAY LADY BANDO 086  
HF TIGER 5T  
HF MAYFLOWER 78P  
SAV BISMARCK 5682  
BAR-E-L MAGNOLIA 143K  
BAR-E-L SAFARI 185  
GENEL TOOTS 573R

BW 88 lbs. WW 820 lbs. Adj. 205D 793 lbs. Adj. 365D 1357 lbs.  
BW +1.0 WW +56 YW +102 Milk +31

# BAR-E-L PROPOSITION 86H

LOT 86H

Male YHB 86H February 11 2020 2160829

BROOKING BANK NOTE 4040  
S: BROOKING FIREBRAND 6068  
BROOKING ANNIE K 390

BAR-E-L MUCHMORE 155A  
D: BAR-E-L ERICA 25C  
XO CROWFOOT ERICA 827U

CONNEALY EARNAN 076E  
E A ROSE 918  
S A V BEST INTEREST 0136  
SOO LINE ANNIE K 9165  
SOUTHLAND THRILLER 83X  
BAR-E-L DUCHESS 160U  
H A IMAGE MAKER 0415  
CROWFOOT ERICA 63135

BW 86 lbs. WW 805 lbs. Adj. 205D 781 lbs. Adj. 365D 1292 lbs.  
BW +1.9 WW +53 YW +87 Milk +29

*PROPOSITION is a long bodied, deep sided, performance bull. This FIREBRAND son will add the pay weight to his calves.*



# BAR-E-L CAPTAIN 88H

LOT 88H

Male YHB 88H February 13 2020 2160809

MAY-WAY BREAKOUT 1310  
S: HF ALCATRAZ 60F  
HF MAYFLOWER 191Z

S A V RESOURCE 1441  
D: BAR-E-L DUCHESS 103C  
BAR-E-L DUCHESS 70Z

AVF BREAKOUT 5409  
MAY-WAY LADY BANDO 086  
HF TIGER 5T  
HF MAYFLOWER 78P  
RITO 707 OF IDEAL 3407 7075  
S A V BLACKCAP MAY 4136  
SOUTHLAND THRILLER 83X  
BAR-E-L DUCHESS 160U

BW 94 lbs. WW 725 lbs. Adj. 205D 713 lbs. Adj. 365D 1200 lbs.  
BW +3.1 WW +54 YW +96 Milk +28

*CAPTAIN has a pedigree that includes two donor dams, 70Z and 160U; prolific producing females of quality and consistency.*



BAR-E-L DUCHESS 160U  
Great grand dam of  
CAPTAIN 88H



# BAR-E-L HAMMERTIME 95H

LOT 95H

Male RLJ 95H February 19 2020 2167607

HA COWBOY UP 5405  
S: HF WALK AWAY JOE 139F  
HF ROSEBUD 246Z

HF G-MAN 29B  
D: BAR-E-L MAGNOLIA 117F  
BAR-E-L MAGNOLIA 70A

HA OUTSIDE 3008  
HA BLACKCAP LADY 1602  
HF TIGER 5T  
HF ROSEBUD 94P  
HF SIMULATOR 62Z  
HF ECHO 178W  
SOUTHLAND THRILLER 83X  
BAR-E-L MAGNOLIA 184R

BW 80 lbs. WW 610 lbs. Adj. 205D 689 lbs. Adj. 365D 1209 lbs.  
BW +2.0 WW +56 YW +92 Milk +18

*HAMMERTIME belongs to our grand daughter, Rylyn. This was her first calf from a great two year old heifer. She is off to a great start! Nice calf to cover some heifers. Calving ease, quality plus!*

BAR-E-L MAGNOLIA 70A  
Grand dam of  
HAMMERTIME 95H



**LOT 97H**  
**BAR-E-L MASTER PLAN 97H**

Male YHB 97H February 19 2020 2160831

MAY-WAY BREAKOUT 1310  
 S: HF ALCATRAZ 60F  
 HF MAYFLOWER 191Z

RING CREEK FLYNN 25A  
 D: BAR-E-L ERICA 107C  
 BAR-E-L ERICA 60A

AVF BREAKOUT 5409  
 MAY-WAY LADY BANDO 086  
 HF TIGER 5T  
 HF MAYFLOWER 78P  
 RING CREEK BURL IVES 88Y  
 RING CREEK AMBUSH LADY 43T  
 GDAR GAME DAY 449  
 BAR-E-L ERICA 22Y

BW 92 lbs. WW 745 lbs. Adj. 205D 748 lbs. Adj. 365D 1306 lbs.  
 BW +2.0 WW +52 YW +89 Milk +32

*MASTER PLAN, is a masculine ALCATRAZ son with a lot of muscle expression and herd bull character. Deep sided, great hair.*



**LOT 98H**  
**BAR-E-L BONUS 98H**

Male YHB 98H February 19 2020 2186225

EXAR CLASSEN 1422B  
 S: EF COLOSSAL 520  
 EXAR BLACKBIRD 5877

S A V HARVESTOR 033B  
 D: BAR-E-L ERICA 163B  
 BAR-E-L ERICA 176X

DAMERON FIRST CLASS  
 EXAR PRINCESS 2006  
 SCHURRTOP MC 2500  
 EXAR BLACKBIRD 444B  
 S A V HERITAGE 6295  
 S A V EMBLYNETTE 7749  
 SOUTHLAND THRILLER 83X  
 GENEL ERICA 433P

BW 86 lbs. WW 765 lbs. Adj. 205D 681 lbs. Adj. 365D 1247 lbs.  
 BW +2.4 WW +46 YW +82 Milk +21

*This COLOSSAL son, BONUS, will really kick it in gear and grow into a powerful herdsire.*



**LOT 103H**  
**BAR-E-L PAYCHECK 103H**

Male YHB 103H February 21 2020 2160813

CONNEALY EARNAN 076E  
 S: BROOKING REAL ESTATE 607Z  
 SOO LINE ROSE 1019

BAR-E-L VINDICATED 109B  
 D: BAR-E-L DUCHESS 48E  
 BAR-E-L DUCHESS 104B

CONNEALY CONSENSUS  
 BRAZILA OF CONANGA 3991 839A  
 SOO LINE MOTIVE 9016  
 E A ROSE 91B  
 S A V HARVESTOR 033B  
 BAR-E-L BLACKBIRD 63U  
 BUSHES ROCK SOLID 983  
 BAR-E-L DUCHESS 174X

BW 76 lbs. Adj. 205D 625 lbs. Adj. 365D 1130 lbs.  
 BW +0.6 WW +41 YW +81 Milk +20

*This nice, smooth, easy fleshing REAL ESTATE son would be a good choice for your heifer pen. His maternal brother was one of the top selling calving ease bulls from last year's sale.*





**LOT 104H**  
**BAR-E-L THE PROPHET 104H**

Male YHB 104H February 22 2020 2160816

O C C ECHELON 857E  
 S: O C C LEGACY 839L  
 O C C DIXIE ERICA 960E

HF ALASKAN 94T  
 D: BAR-E-L LADY MONOGRAM 42Y  
 B.B.A.R BIG JAKE 1216

D H D TRAVELER 6807  
 DIXIE ERICA OF CH 1019  
 O C C ANCHOR 771A  
 DIXIE ERICA OF R R 4345  
 HF KODIAK 5R  
 HF ECHO 112R  
 B.B.A.R BIG JAKE 1216  
 B.B.A.R BIG JAKE 1216

BW 96 lbs. WW 780 lbs. Adj. 205D 794 lbs. Adj. 365D 1385 lbs.  
 BW +3.0 WW +49 YW +78 Milk +21

*PROPHET is another popular pick in the pen from the great LADY MONOGRAM. This stout, attractive made son of O C C LEGACY has a lot to offer and balances performance with maternal excellence.*



**BAR-E-L LADY MONOGRAM 42Y**  
 Dam of THE PROPHET 104H



**O C C LEGACY 839L**  
 Sire of THE PROPHET 104H



**BAR-E-L LAWMAN 48G** - Maternal brother to BAR-E-L THE PROPHET 104H. Purchased by Black Meadows Angus.



**LOT 108H**  
**BAR-E-L COTTONEYE JOE 108H**

Male YHB 108H February 24 2020 2160819

HA COWBOY UP 5405  
 S: HF WALK AWAY JOE 139F  
 HF ROSEBUD 246Z

HA OUTSIDE 3008  
 HA BLACKCAP LADY 1602  
 HF TIGER 5T  
 HF ROSEBUD 94P  
 S A V INTERNATIONAL 2020  
 HF TIBBIE 115S  
 HF REBEL 53Y  
 HF ECHO 163X

HF ECHO 73A  
 Grand dam to  
 BAR-E-L COTTONEYE  
 JOE 108H and  
 BAR-E-L REPUBLIC 119H

BW 80 lbs. WW 710 lbs. Adj. 205D 803 lbs. Adj. 365D 1368 lbs.  
 BW +1.3 WW +69 YW +112 Milk +20



*These two full blood brothers produced from full sisters are maternally excellent and express the performance of HF WALK AWAY JOE 139F.*

**LOT 119H**  
**BAR-E-L REPUBLIC 119H**

Male YHB 119H February 29 2020 2160825

HA COWBOY UP 5405  
 S: HF WALK AWAY JOE 139F  
 HF ROSEBUD 246Z

HA OUTSIDE 3008  
 HA BLACKCAP LADY 1602  
 HF TIGER 5T  
 HF ROSEBUD 94P  
 S A V INTERNATIONAL 2020  
 HF TIBBIE 115S  
 HF REBEL 53Y  
 HF ECHO 163X

BW 79 lbs. WW 700 lbs. Adj. 205D 809 lbs. Adj. 365D 1347 lbs.  
 BW +1.1 WW +69 YW +112 Milk +21





**HF EVENING TINGE 38C**  
 Dam of ROYAL RESERVE 120H

**LOT 120H**  
**BAR-E-L ROYAL RESERVE 120H**

Male YHB 120H March 01 2020 2160826

S A V RENOWN 3439	RITO 707 OF IDEAL 3407 7075
S: BAR-E-L RESOLUTION 34F	S A V BLACKCAP MAY 4136
FLAG MISSY GAL 90568	TC BOOM TIME 434
	SCR RD 3499-60854
LLB REFLECTION 607A	MCATL REFLECTION 120-577
D: HF EVENING TINGE 38C	S00 LINE DANA 9028
HF EVENING TINGE 118Z	HFT TIGER 5T
	HF EVENING TINGE 55N

BW 75 lbs. WW 690 lbs. Adj. 205D 728 lbs. Adj. 365D 1259 lbs.  
 BW -0.4 WW +51 YW +91 Milk +25



**BAR-E-L ROYAL MINT 88G**  
 Maternal brother to ROYAL RESERVE 120H - High selling bull in 2020 sale at \$27,500. Owned with BAR-H Land and Cattle.



**BAR-E-L CUSTOM MADE 53G**  
 Maternal brother to ROYAL RESERVE 120H - 2nd High selling bull in 2020 sale at \$27,000. Purchased by Wilbar Cattle Co.

*ROYAL RESERVE is the natural born son from our donor and prolific producer HF EVENING TINGE 38C. ROYAL RESERVE displays a great deal of character and presence. His 75 lb. birth weight is real and consistent in the progeny from the 38C cow. A striking resemblance to his maternal brothers who topped last year's sale.*

**LOT 121H**  
**BAR-E-L REAFFIRM 121H**

Male YHB 121H March 01 2020 2160827

S A V RENOWN 3439 RITO 707 OF IDEAL 3407 7075  
 S: BAR-E-L RESOLUTION 34F S A V BLACKCAP MAY 4136  
 FLAG MISSY GAL 90568 TC BOOM TIME 434  
 SCR RD 3499-60854  
 HFG-MAN 29B HF SIMULATOR 62Z  
 HF ECHO 178W  
 D: BAR-E-L ERICA 142E H A IMAGE MAKER 0415  
 XO CROWFOOT ERICA 827U CROWFOOT ERICA 63135

BW 102 lbs. WW 765 lbs. Adj. 205D 844 lbs. Adj. 365D 1375 lbs.  
 BW +4.1 WW +62 YW +105 Milk +26

*This long spined, big topped bull is a solid performance calf.*



**LOT 129H**  
**BAR-E-L BLUE STEEL 129H**

Male DTL 129H March 03 2020 2167099

S A V RENOWN 3439 RITO 707 OF IDEAL 3407 7075  
 S: BAR-E-L RESOLUTION 34F S A V BLACKCAP MAY 4136  
 FLAG MISSY GAL 90568 TC BOOM TIME 434  
 SCR RD 3499-60854  
 SOUTHLAND THRILLER 83X SOUTHLAND TWO FIFTY 250T  
 D: BAR-E-L BLOSSOM 89Z SOUTHLAND BELLE 89R  
 BAR-E-L BLOSSOM 231W DBRL 03M TITAN 4T  
 BAR-E-L BLOSSUM 22N

BW 88 lbs. WW 710 lbs. Adj. 205D 756 lbs. Adj. 365D 1253 lbs.  
 BW +1.1 WW +44 YW +77 Milk +17

*The RESOLUTION sons are very consistent in type, and will add performance and quality to their progeny that can be counted on.*

# Seed Oats For Sale



**We have seed oats:**

- Milling variety
- White pulp kernal
- Strong straw
- Disease resistant
- High yield
- Cows really like the straw!

• Call Dave  
 403.740.6788



*Current and future combine crew!  
 Dallas, Denver, Olivia,  
 Boston and Rylyn.*



**LOT 152H**  
**BAR-E-L SCARFACE 152H**

Male ET YHB 152H March 09 2020 2186227

MAY-WAY BREAKOUT 1310  
 S: HF ALCATRAZ 60F  
 HF MAYFLOWER 191Z  
 SOUTHLAND THRILLER 83X  
 D: BAR-E-L DUCHESS 70Z  
 BAR-E-L DUCHESS 160U  
 AVF BREAKOUT 5409  
 MAY-WAY LADY BANDO 086  
 HF TIGER 5T  
 HF MAYFLOWER 78P  
 SOUTHLAND TWO FIFTY 250T  
 SOUTHLAND BELLE 89R  
 S A V NET WORTH 4200  
 BAR-E-L DUCHESS 116R

BW 86 lbs. WW 655 lbs. Adj. 205D 720 lbs. Adj. 365D 1220 lbs.  
 BW +3.2 WW +50 YW +89 Milk +47

*SCARFACE is a product of the DUCHESS family and produced from our donor program, DUCHESS 70Z and DUCHESS 160U.*



**BAR-E-L MUCHMORE 155A**  
 High seller in our 2014 sale to Pedersen Livestock. Full brother to BAR-E-L DUCHESS 70Z, dam of SCARFACE.

**LOT 158H**  
**BAR-E-L CHIVAS 158H**

Male YHB 158H March 14 2020 2179644

EXAR CLASSEN 1422B  
 S: EF COLOSSAL 520  
 EXAR BLACKBIRD 5877  
 H A IMAGE MAKER 0415  
 D: XO CROWFOOT ERICA 827U  
 CROWFOOT ERICA 63135  
 DAMERON FIRST CLASS  
 EXAR PRINCESS 2006  
 SCHURRTOP MC 2500  
 EXAR BLACKBIRD 4448  
 HERO 6267 OF RR 2418  
 H A RITO BLACKCAP 9038  
 O C C LEGACY 839L  
 CROWFOOT ERICA 1652L

BW 88 lbs. WW 630 lbs. Adj. 205D 736 lbs. Adj. 365D 1362 lbs.  
 BW +0.7 WW +42 YW +74 Milk +27

*This moderate, easy fleshing COLOSSAL son has the look of his sire. His dam, ERICA 827U, lead off the historic Crowfoot dispersal.*





**LOT 169H**  
**BAR-E-L RIO BRAVO 169H**

Male YHB 169H March 22 2020 2167104

S A V SEEDSTOCK 483B  
 S: BAR-E-L MILLENIUM 60E  
 BAR-E-L DUCHESS 160U

HF KODIAK 5R  
 D: MCNEELY LC 5R BROOKE 10B  
 BROOKMORE LUCY 28X

S A V REGISTRY 2831  
 S A V BLACKCAP MAY 4136  
 S A V NET WORTH 4200  
 BAR-E-L DUCHESS 116R  
 SANDY BAR ADVANTAGE 43M  
 WILBAR RUBY 955N  
 S A V NET WORTH 4200  
 BROOKMORE LUCY 61N

BW 88 lbs. WW 680 lbs. Adj. 205D 798 lbs. Adj. 365D 1291 lbs.  
 BW +1.0 WW +55 YW +97 Milk +22

*RIO BRAVO is easy to spot in the pen. This MILLENIUM son is deep sided, big topped with thickness throughout.*



**LOT 170H**  
**BAR-E-L DELIVERANCE 170H**

Male YHB 170H March 24 2020 2167103

HF SIMULATOR 62Z  
 S: HF G-MAN 29B  
 HF ECHO 178W

PEAK DOT UNANIMOUS 743B  
 D: BAR-E-L ANNIE 30E  
 EVERBLACK ANNIE 28C

MCATL PURE PRODUCT 903-55  
 HF EVENING TINGE 6X  
 HF HEMI 151T  
 HF ECHO 97K  
 VISION UNANIMOUS 141B  
 PEAK DOT HEATHER 775Y  
 U-2 NIGHTTRAIN 422A  
 EVERBLACK ANNIE 92U

BW 82 lbs. WW 600 lbs. Adj. 205D 745 lbs. Adj. 365D 1252 lbs.  
 BW +1.7 WW +48 YW +81 Milk +24

*The last of the G-MAN sons, this moderate, easy doing son lookS great from any angle. His grand dam was the high selling female at the 2016 Northern Select Sale at \$16,000 for Everblack.*

**LOT 172H**  
**BAR-E-L GODFATHER 172H**

Male YHB 172H March 30 2020 2167098

S A V RENOWN 3439  
 S: BAR-E-L RESOLUTION 34F  
 FLAG MISSY GAL 9056B

BAR-E-L NATURAL LAW 52Y  
 D: BAR-E-L ROSE 12C  
 GERLEI ROSE 89Y

RITO 707 OF IDEAL 3407 7075  
 S A V BLACKCAP MAY 4136  
 TC BOOM TIME 434  
 SCR RD 3499-60854  
 S A V BISMARCK 5682  
 BAR-E-L MAGNOLIA 143K  
 STUART DESTINATION 32S  
 GERLEI ROSE 11T

BW 84 lbs. WW 640 lbs. Adj. 205D 783 lbs. Adj. 365D 1335 lbs.  
 BW +1.0 WW +55 YW +95 Milk +24

*Another fault free RESOLUTION son from the ROSE family.*



*BAR-E-L ROSE 99F  
 Maternal sister to  
 GODFATHER 172H  
 Pick of BAR-E-L heifers by  
 Bohrsen Marketing and  
 KT Ranches*



# Open Heifers

LOT  
6H

## BAR-E-L MARY 6H

Female YHB 6H January 23 2020 2155694

MAY-WAY BREAKOUT 1310  
S: HF ALCATRAZ 60F  
HF MAYFLOWER 191Z

500 LINE GRIZZLEY 9034  
D: WILGOR 3W MARY 32Z  
WLL MARY 3W

AVF BREAKOUT 5409  
MAY-WAY LADY BANDO 086  
HF TIGER 5T  
HF MAYFLOWER 78P  
HF KODIAK 5R  
WINDOVER QUEEN SUSAN 71P  
B C C-J C L EMBLAZON 038-287  
WLL MARY 1T

BW 82 lbs. WW 710 lbs. Adj. 205D 570 lbs. Adj. 365D 873 lbs.  
BW +2.0 WW +43 YW +80 Milk +30

*A flashy, attractive female showing the breeding power in ALCATRAZ.*



BAR-E-L MARY 68G  
Maternal sister to MARY 6H  
Purchased by Murray & Cynthia Steinkay.



## BAR-E-L TIBBIE 10H

LOT  
10H

Female YHB 10H January 24 2020 2155697

MAY-WAY BREAKOUT 1310  
S: HF ALCATRAZ 60F  
HF MAYFLOWER 191Z

MUSGRAVE BIG SKY  
D: BAR-E-L TIBBIE 78D  
BAR-E-L TIBBIE 3Y

AVF BREAKOUT 5409  
MAY-WAY LADY BANDO 086  
HF TIGER 5T  
HF MAYFLOWER 78P  
CONNEALY EARNAN 076E  
SAV PRIMROSE 7861  
HF HEMI 176W  
HF TIBBIE 115S

BW 84 lbs. WW 765 lbs. Adj. 205D 627 lbs. Adj. 365D 919 lbs.  
BW +1.9 WW +55 YW +99 Milk +31

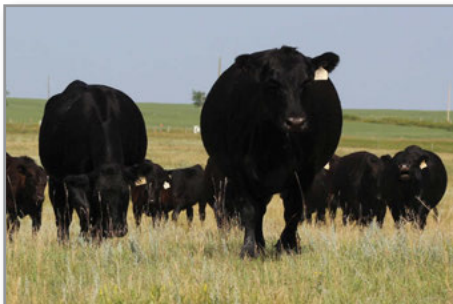
*A long spined, attractive made ALCATRAZ daughter. Comes from the TIBBIE family.*



BAR-E-L TIBBIE 173B - CWA Jr. Calf Champion  
Maternal sister to dam of TIBBIE 10H. Purchased by Riverfront Angus.



BAR-E-L MR TIBBS 61C  
Son of TIBBIE 115S - Herdsire at Arda Farms, Freeway Angus, and BAR-E-L



What a difference a few months makes! Looking forward to green grass!



**BAR-E-L APRIL 17H**

LOT 17H

Female YHB 17H January 27 2020 2155703

MAY-WAY BREAKOUT 1310  
 S: HF ALCATRAZ 60F  
 HF MAYFLOWER 191Z  
 SAV RESOURCE 1441  
 D: BAR-E-L APRIL 51F  
 BAR-E-L APRIL 82X

AVF BREAKOUT 5409  
 MAY-WAY LADY BANDO 086  
 HF TIGER 5T  
 HF MAYFLOWER 78P  
 RITO 707 OF IDEAL 3407 7075  
 SAV BLACKCAP MAY 4136  
 HF TIGER 5T  
 BAR-E-L APRIL 85U

BW 85 lbs. WW 715 lbs. Adj. 205D 642 lbs. Adj. 365D 953 lbs.  
 BW +3.3 WW +60 YW +113 Milk +28

*A special daughter from APRIL family, they always rise to the top! APRIL 51F would be at the front end of our two year old group. A double bred TIGER.*

**BAR-E-L MARY 25H**

LOT 25H

Female YHB 25H January 29 2020 2155712

MAY-WAY BREAKOUT 1310  
 S: HF ALCATRAZ 60F  
 HF MAYFLOWER 191Z  
 BAR-E-L MR TIBBS 61C  
 D: BAR-E-L MARY 55E  
 WILGOR 3W MARY 32Z

AVF BREAKOUT 5409  
 MAY-WAY LADY BANDO 086  
 HF TIGER 5T  
 HF MAYFLOWER 78P  
 SAV INTERNATIONAL 2020  
 HF TIBBIE 115S  
 SOO LINE GRIZZLEY 9034  
 WLL MARY 3W

BW 79 lbs. WW 650 lbs. Adj. 205D 563 lbs. Adj. 365D 900 lbs.  
 BW +1.2 WW +44 YW +79 Milk +29

*Another favorite female in the pen. We like the consistency and udder quality of the MR TIBBS daughters.*



**BAR-E-L NAOMI 54H**

LOT  
54H

Female YHB 54H February 03 2020 2155734

MAY-WAY BREAKOUT 1310  
S: HF ALCATRAZ 60F  
HF MAYFLOWER 191Z

BAR-E-L VINDICATED 109B  
D: BAR-E-L NAOMI 158E  
BAR-E-L NAOMI 83U

AVF BREAKOUT 5409  
MAY-WAY LADY BANDO 086  
HF TIGER 5T  
HF MAYFLOWER 78P  
S A V HARVESTOR 0338  
BAR-E-L BLACKBIRD 63U  
S A V NET WORTH 4200  
BAR-E-L NAOMI 11N

BW 72 lbs. WW 636 lbs. Adj. 205D 564 lbs. Adj. 365D 747 lbs.  
BW +1.8 WW +50 YW +89 Milk +25

*A stylish, well balanced female that will be a low maintenance and effective producer.*



FLAG MISSY GAL 90568 - Grand dam of MISSY GAL 61H. She is also the dam of BAR-E-L REVOLUTION 34F, BAR-E-L herdsire.

**BAR-E-L MISSY GAL 61H**

LOT  
61H

Female YHB 61H February 05 2020 2155739

CONNEALY EARNAN 076E  
S: BROOKING REAL ESTATE 6072  
500 LINE ROSE 1019

S A V SENSATION 5615  
D: BAR-E-L MISSY GAL 13F  
FLAG MISSY GAL 90568

CONNEALY CONSENSUS  
BRAZILA OF CONANGA 3991 839A  
500 LINE MOTIVE 9016  
E A ROSE 918  
S A V REGISTRY 2831  
S A V BLACKCAP MAY 4136  
TC BOOM TIME 434  
SCR RD 3499-60854

BW 90 lbs. WW 750 lbs. Adj. 205D 689 lbs. Adj. 365D 1043 lbs.  
BW +3.3 WW +57 YW +107 Milk +24

*Certainly one of the power heifers in the group. Produced by her two year old dam who happens to be a maternal sister to herdsire REVOLUTION 34F.*



## BAR-E-L INA 73H

LOT  
73H

Female YHB 73H February 08 2020 2156326

MAY-WAY BREAKOUT 1310  
S: HF ALCATRAZ 60F  
HF MAYFLOWER 191Z

AVF BREAKOUT 5409  
MAY-WAY LADY BANDO 086  
HF TIGER 5T  
HF MAYFLOWER 78P  
S A V RESOURCE 1441  
TLA BEAUTY 6R  
BAR-E-L SAFARI 18S  
BAR-E-L ESSENCE 59S

BW 82 lbs. WW 670 lbs. Adj. 205D 578 lbs. Adj. 365D 881 lbs.  
BW +1.6 WW +41 YW +75 Milk +29

*A broody female by ALCATRAZ. Longevity in this family!  
We had the 59S grand dam for 15 years.*

## BAR-E-L RUBY 106H

LOT  
106H

Female YHB 106H February 23 2020 2160260

MAY-WAY BREAKOUT 1310  
S: HF ALCATRAZ 60F  
HF MAYFLOWER 191Z

AVF BREAKOUT 5409  
MAY-WAY LADY BANDO 086  
HF TIGER 5T  
HF MAYFLOWER 78P  
HF TIGER 5T  
WILBAR GEORGINA 706M  
BLACK WHEEL TERMINATOR 43R  
WILBAR RUBY 313K

WILBAR TIGERSHARK 420Y  
D: WILBAR RUBY 224A  
WILBAR RUBY 74W

BW 85 lbs. WW 660 lbs. Adj. 205D 598 lbs. Adj. 365D 908 lbs.  
BW +2.2 WW +42 YW +81 Milk +32

*This ALCATRAZ daughter is deep, moderate, and easy doing.*



## BAR-E-L PATRICIA 112H

LOT  
112H

Female YHB 112H February 26 2020 2155739

REMITALL F CROSSFIRE 102C  
S: REMITALL F CROSSFIRE 89E  
REMITALL F PRINCESS 25B

S A V HARVESTOR 0338  
REMITALL F KARMA 102W  
S A V RESOURCE 1441  
BROOKMORE PRINCESS 46T  
S A V RESOURCE 1441  
LEELA ALLEGRA 12W  
REMINGTON RIGHT TIME 124R  
ATLASTA PATRICIA 49R

BAR-E-L CELEBRITY 60C  
D: ATLASTA PATRICIA 162F  
ATLASTA 49R MISS RIGHT TIME 14

BW 75 lbs. WW 590 lbs. Adj. 205D 594 lbs. Adj. 365D 914 lbs.  
BW +2.4 WW +37 YW +73 Milk +24

*We purchased PATRICIA in dam from Brian Sutter. A very nice two year old with a perfect udder.*





HF TIBBIE 115S - Dam of TIBBIE 132H

**LOT 132H**  
**BAR-E-L TIBBIE 132H**

Female ETYHB 132H March 03 2020 2179388

CONNEALY EARNAN 076E  
 S: BROOKING BANK NOTE 4040  
 E A ROSE 918

HF POWER SOURCE 94M  
 D: HF TIBBIE 115S  
 HF TIBBIE 90N

CONNEALY CONSENSUS  
 BRAZILA OF CONANGA 3991 839A  
 S A V FINAL ANSWER 0035  
 E A ROSE 738  
 RIVERBEND POWERLINE 0050  
 DURALTA 14C ECHO 32E  
 GREENS PREMIUM 7578  
 HF TIBBIE 50D

BW 96 lbs. WW 765 lbs. Adj. 205D 711 lbs. Adj. 365D 903 lbs.  
 BW +2.8 WW +46 YW +75 Milk +13

*A real gem! The last daughter of TIBBIE 115S, a cow with 25 recorded progeny in the Canadian Angus registry. There are multiple daughters and granddaughters in the BAR-E-L herd. Look for several descendants represented in this sale.*

**LOT 134H**  
**BAR-E-L TIBBIE 134H**

Female YHB 134H March 05 2020 2160671

CONNEALY EARNAN 076E  
 S: BROOKING REAL ESTATE 6072  
 500 LINE ROSE 1019

S A V SEEDSTOCK 4838  
 D: BAR-E-L TIBBIE 34E  
 HF TIBBIE 115S

CONNEALY CONSENSUS  
 BRAZILA OF CONANGA 3991 839A  
 500 LINE MOTIVE 9016  
 E A ROSE 918  
 S A V REGISTRY 2831  
 S A V BLACKCAP MAY 4136  
 HF POWER SOURCE 94M  
 HF TIBBIE 90N

BW 77 lbs. WW 650 lbs. Adj. 205D 636 lbs. Adj. 365D 906 lbs.  
 BW +0.8 WW +47 YW +86 Milk +19

*These REAL ESTATE daughters make excellent mothers. Balanced udders, small teats, and good calf raisers.*



**LOT 135H**  
**BAR-E-L MARG 135H**

Female YHB 135H March 05 2020 2160672

EXAR CLASSEN 1422B  
 S: EF COLOSSAL 520  
 EXAR BLACKBIRD 5877

BAR-E-L NATURAL LAW 52Y  
 D: BAR-E-L MARG 13C  
 BAR-E-L MARG 109Y

DAMERON FIRST CLASS  
 EXAR PRINCESS 2006  
 SCHURRTOP MC 2500  
 EXAR BLACKBIRD 4448  
 S A V BISMARCK 5682  
 BAR-E-L MAGNOLIA 143K  
 HF UNDISPUTED 183U  
 BAR J P MARG 77N

BW 78 lbs. WW 675 lbs. Adj. 205D 629 lbs. Adj. 365D 882 lbs.  
 BW +1.6 WW +43 YW +78 Milk +22

*This COLOSSAL daughter combines the maternal strength of NATURAL LAW 52Y, and an outstanding cow family.*



**LOT 151H**  
**BAR-E-L BLACK ANGEL 151H**

Female ET YHB 151H March 09 2020 2179392

O C C ECHELON 857E  
 S: O C C LEGACY 839L  
 O C C DIXIE ERICA 960E

S A V NET WORTH 4200  
 D: WERNER BLACK ANGEL 1299  
 CLEARWATER BLACK ANGEL 395

D H D TRAVELER 6807  
 DIXIE ERICA OF C H 1019  
 O C C ANCHOR 771A  
 DIXIE ERICA OF R R 4345  
 S A V 8180 TRAVELER 004  
 S A V MAY 2410  
 B/R NEW FRONTIER 095  
 CLEARWATER BLACK ANGEL 1728

BW 74 lbs. WW 680 lbs. Adj. 205D 646 lbs. Adj. 365D 896 lbs.  
 BW +0.6 WW +36 YW +71 Milk +28

*The BLACK ANGEL's have been popular throughout the Angus breed. The dam of 151H has 82 recorded progeny in the Canadian Angus registry. A combination of two popular breed legends, LEGACY AND NET WORTH.*



WERNER BLACK ANGEL 1299 - Dam of BLACK ANGEL 151H

Return Undeliverable  
Canadian Addresses To:  
Bar-E-L Angus  
Box 2056 Stettler, Alberta T0C 2L0



RETURN POSTAGE GUARANTEED  
PORT DE RETOUR GARANTI

# BALANCING COWHERD EXCELLENCE WITH PERFORMANCE & CARCASS QUALITY

